



USYD Dial-up

Windows XP Setup Guides

Document Description: Setup instructions for USYD Dialup in Windows XP

For user by: All staff and students setting USYD Dialup on Windows XP

Quick Start:

Dialling Number: 9325 0333

Automatic Configuration Script: <http://www.usyd.edu.au/proxy.pac>

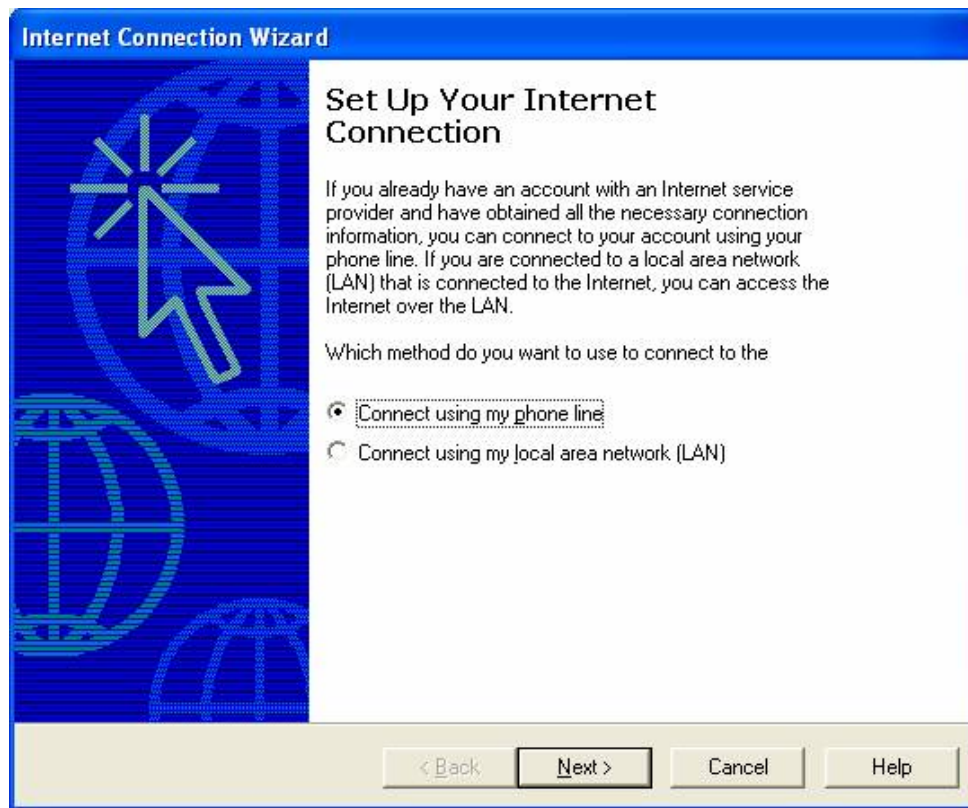


1 Configuring a dial-up connection

- 1.1. Click on the **Start** button (found in the bottom left hand corner) and select **Run** from the menu. Type in **inetwiz** and click on the **OK** button. This is illustrated below.



- 1.2. Make sure **Connect using my phone line** is selected and press the **next** button. This is illustrated below.





- 1.3. Select **Create a new dial-up connection** and click on the **next** button. This is illustrated below.

Internet Connection Wizard

Dial-Up Connection

The dial-up connection contains the settings your computer uses to connect to the Internet. You already have one or more dial-up connections on your computer. Either create a new dial-up connection or use an existing one. If you choose an existing connection, you can change its settings later.

Create a new dial-up connection

Use an existing dial-up connection

< Back Next > Cancel Help

- 1.4. Type in **9325 0333** in the **Telephone number:** box.
- 1.5. Type **02** into the **Area code:** box.
- 1.6. Select **Australia** from the **Country/region name and code** drop down box.

Internet Connection Wizard

Step 1 of 3: Internet Account Connection Information

Type the phone number you dial to connect to your ISP.

Area code: 02 Telephone number: 9325 0333

Country/region name and code: Australia (61)

Use area code and dialing rules

To configure connection properties, click Advanced. (Most ISPs do not require advanced settings.) Advanced...

< Back Next > Cancel Help



- 1.7. Into the **User name:** box, type in your **UniKey** login name.
- 1.8. Into the **Password:** box, type in your **UniKey** password.
- 1.9. Click on the **Next** button. This is illustrated below.

The screenshot shows the 'Internet Connection Wizard' window at Step 2 of 3: 'Internet Account Logon Information'. The window has a blue title bar and a light beige background. A mouse cursor is pointing at a star icon in the top right corner. The main text reads: 'Type the user name and password you use to log on to your ISP. Your user name may also be referred to as your Member ID or User ID. If you do not know this information, contact your ISP.' Below this text are two input fields: 'User name:' containing 'abcd1234' and 'Password:' containing a masked password '*****'. At the bottom of the window are four buttons: '< Back', 'Next >', 'Cancel', and 'Help'.

- 1.10. In the **Name:** box, type in a name for your connection. We have chosen **University of Sydney**, but you can type in anything you want.
- 1.11. Click the **Next** button to continue. This is illustrated below.

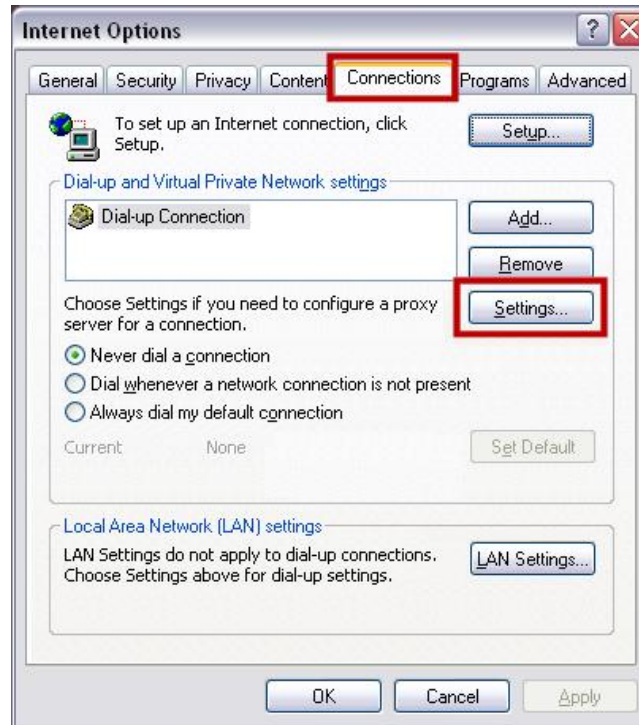
The screenshot shows the 'Internet Connection Wizard' window at Step 3 of 3: 'Configuring Your Computer'. The window has a blue title bar and a light beige background. A mouse cursor is pointing at a star icon in the top right corner. The main text reads: 'Type the name you want to use for this connection. This can be the name of your ISP or any name you want to use.' Below this text is a single input field labeled 'Name:' containing the text 'University of Sydney'. At the bottom of the window are four buttons: '< Back', 'Next >', 'Cancel', and 'Help'.



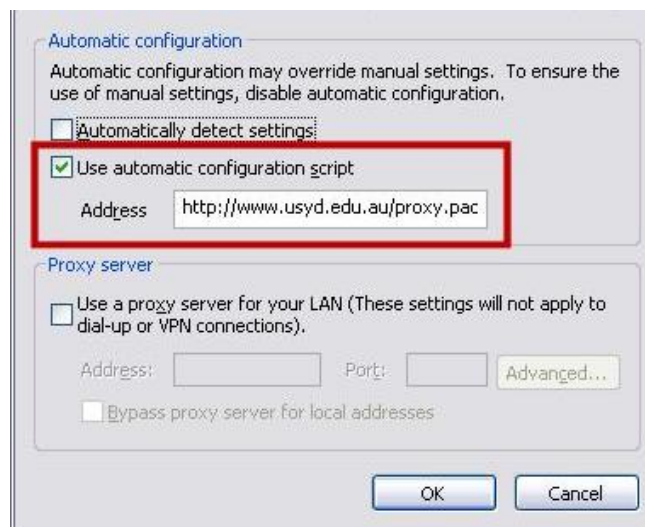
- 1.12. Select **No** and click the **Next** button to continue. This is illustrated below.
1.13. Click **Finish** to complete the dialup configuration process.



- 1.14. Now you will need to configure your proxy settings so you can get web sites that are not within the University. The following guide is for Internet Explorer v6. If you are using another browser to access the internet, you will find setup instructions on the following [proxy settings \(http://itassist.usyd.edu.au/staff/support/setup/internet/index.shtml\)](http://itassist.usyd.edu.au/staff/support/setup/internet/index.shtml) guide
1.15. Open Internet Explorer, go to **Tools** and then **Internet Options**



- 1.16. Click on the **Connections** tab
- 1.17. Click on **Settings** under the **Dial-up and Virtual Private Network settings** heading



- 1.18. You have now finished setting up your Dial-up connection.