



USYD Dial-up

Windows 2000 Setup Guide

Document Description: Setup instructions for Dial-up on Windows 2000

For use by: All staff and students setting up their computer for USYD Dial-up

Quick Start:

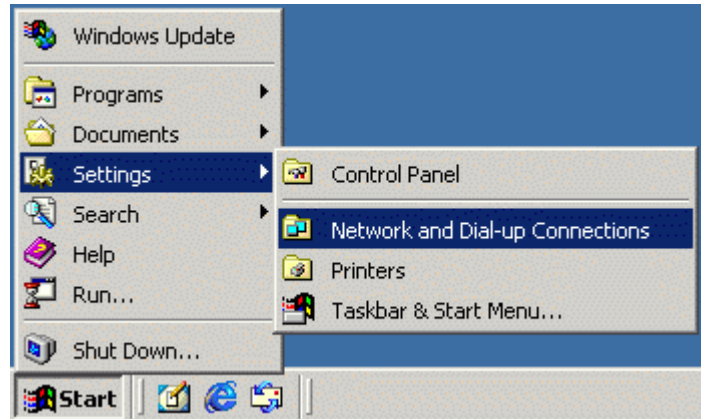
Dial in Number: 9325 0333

Automatic Configuration Script: <http://www.usyd.edu.au/proxy.pac>

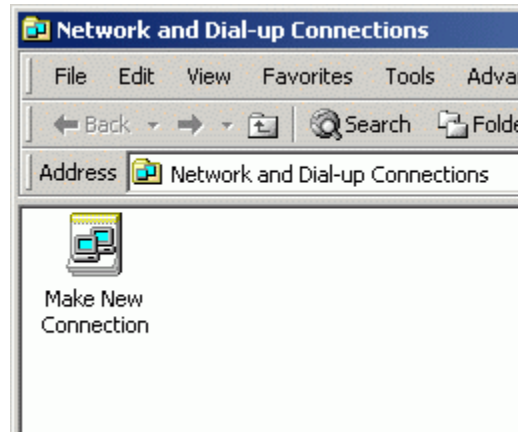


1 Setting up a Dial-Up Connection

1.1. From the Desktop, Click on **Start**, **Settings** then **Network and Dial-up Connections**.

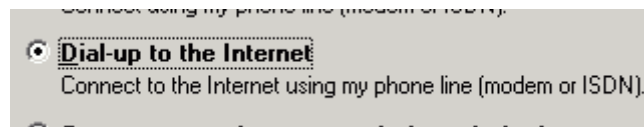


1.2. This will open up the **Network and Dial-up Connections** window. Double click the icon labeled **Make New Connection**.



1.3. You will be asked to select a **Network Connection Type**.

1.4. Choose **Dial-up to the Internet** and click **Next**.



1.5. Next you will be asked whether you already have an Internet account.

1.6. Select **I want to set up my Internet connection manually** and Click **Next**.



I want to set up my Internet connection manually, or I want to connect through a local area network (LAN).

- 1.7. Next the Setting Up page appears. Select **I connect through a phone line and modem** and Click **Next**.

How do you connect to the Internet?

connect through a phone line and a modem

I connect through a local area network (LAN)

- 1.8. If your modem is not installed: This will start the "Install New Modem" window
- 1.9. Follow the directions to have Windows detect and install your modem. If your modem is already installed: This will bring up the **Step 1 of 3** window

Type the phone number you dial to connect to your ISP.

Area code: Telephone number:
02 - 93250333

Country/region name and code:
Australia (61)

Use area code and dialing rules

To configure connection properties, click Advanced.
(Most ISPs do not require advanced settings.)

Advanced...

Telephone number 93250333

Area Code 02

Country code Australia (61)

- 1.10. Uncheck the box marked **Use area code and dialing rules**.
- 1.11. Click **OK** and then **Next**.
- 1.12. This should bring up the "Step 2 of 3..." window



Type the user name and password you use to log on to your ISP. Your user name may also be referred to as your Member ID or User ID. If you do not know this information, contact your ISP.

User name:

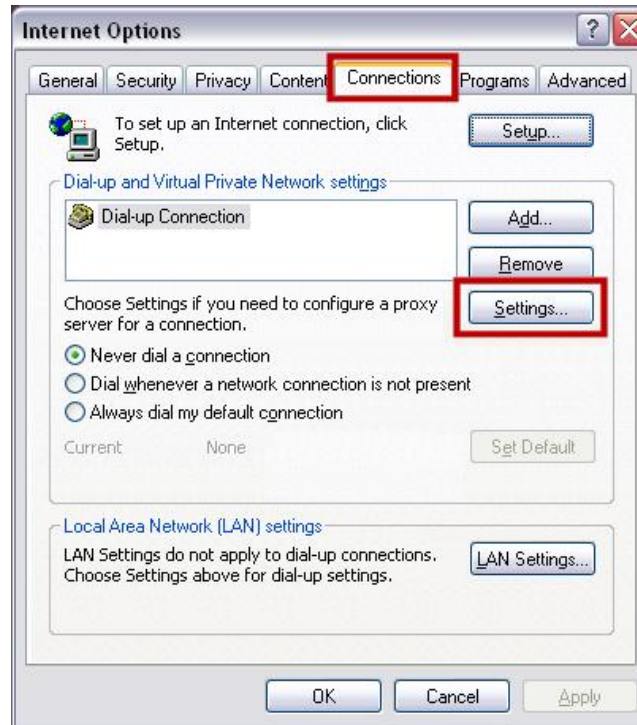
Password:

- 1.13. Enter your login name in the Box marked **User name** and your password in the box marked **Password**, then click Next
- 1.14. This should bring up the "Step 3 of 3" window. Name the connection. (It's not really important what you name it, but it is helpful to name it in a way that reminds you of what it is) Click Next

Type a name for the dial-up connection. This can be the name of your ISP or any name you want to use.

Connection name:

- 1.15. Now you will need to configure your proxy settings so you can get web sites that are not within the University. The following guide is for Internet Explorer v6. If you are using another browser to access the internet, you will find setup instructions on the following [proxy settings](http://itassist.usyd.edu.au/staff/support/setup/internet/index.shtml) (<http://itassist.usyd.edu.au/staff/support/setup/internet/index.shtml>) guide
- 1.16. Open Internet Explorer, go to **Tools** and then **Internet Options**



- 1.17. Click on the **Connections** tab
- 1.18. Click on **Settings** under the **Dial-up and Virtual Private Network settings** heading

