



## Dial Up

### Setup guide for MAC OS Classic

Document Description: Setup guide for USYD Dialup on MAC OS Classic

For user by: All staff and students setting up USYD Dialup on MAC OS Classic

Quick Start:

**Dial in Number:** 9325 0333

**Automatic Configuration script:** <http://www.usyd.edu.au/proxy.pac>



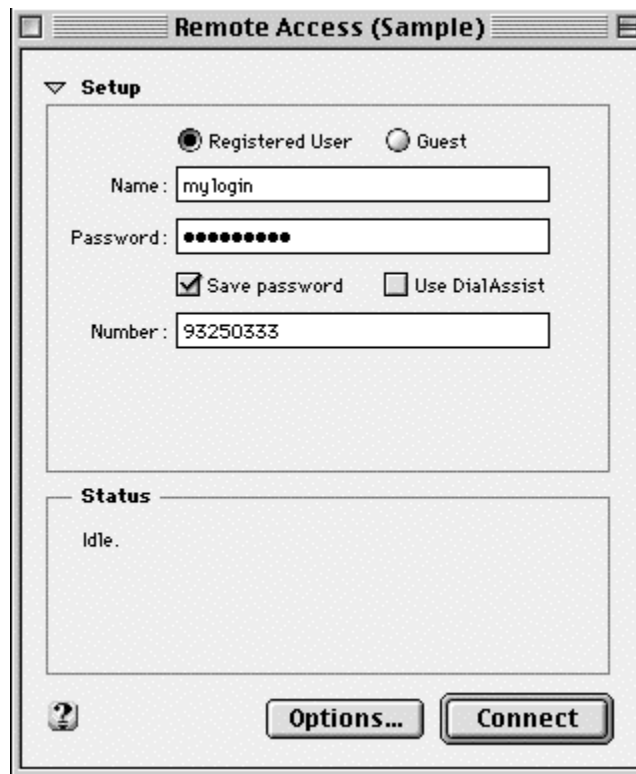
## 1 Mac OS 8.0 or Above User Guide

1.1. There are two steps involved:

- 1.1.1. Configuring PPP / Remote Access
- 1.1.2. Configuring TCP

1.2. Configure PPP/Remote Access

- 1.2.1. To do this go to the apple menu, Control Panels -> PPP (or Remote Access). See below.
- 1.2.2. NOTE: PPP/Remote Access comes with your OS 8.0+, you do NOT install PPP from our CD / disk



1.2.3. The configuration for PPP/Remote Access are:

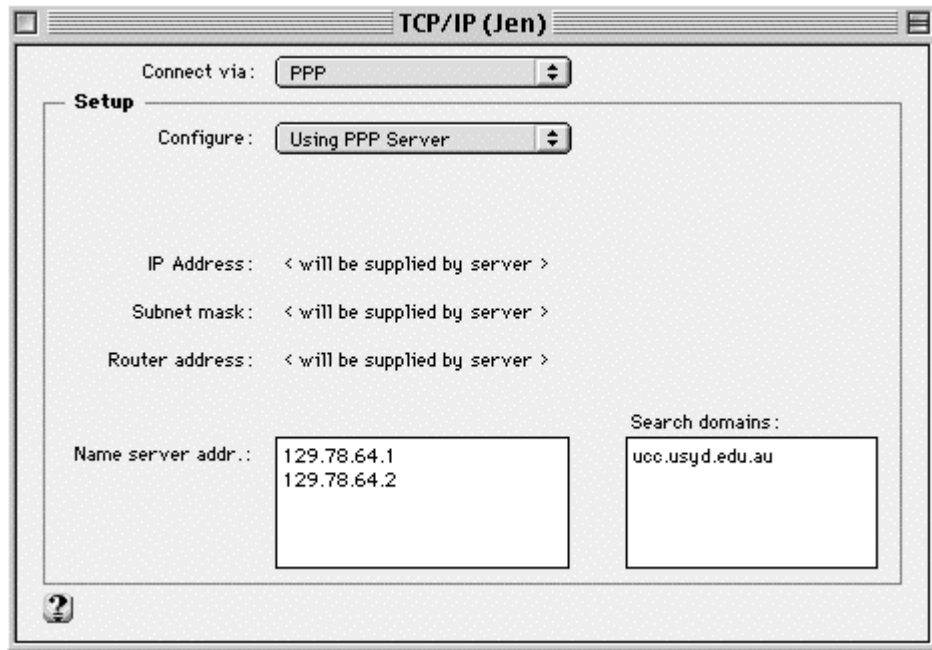
- 1.2.3.1. Select "Registered user".
- 1.2.3.2. Put your login name (user name) in the Name box. Login name must be in lower case as it does NOT contain space or dot '.'.
- 1.2.3.3. The Password is case sensitive.
- 1.2.3.4. Enter 9325 0333 in the Number field. This is the phone number your modem dials to connect to our modem pool.

1.3. Configuring TCP/IP

- 1.3.1. Open Transport (TCP/IP) is the TCP/IP manager. It supersedes MacTCP that was used in earlier versions of Mac OS.



- 1.3.2. To configure Open Transport for use with PPP go to Control Panel → TCP/IP. A dialog box will appear as shown below.



- 1.4. The configuration for TCP/IP is as follows:
- 1.4.1. Set the connect via drop down list box to FreePPP (Depending on which program you are using)
  - 1.4.2. Set the Configure drop-down list box to Using PPP server (not Manual as shown in Figure 8)
  - 1.4.3. Set the Domain Name to ucc.usyd.edu.au
  - 1.4.4. Set the Name server Addresses to 129.78.64.1 and 129.78.64.2
  - 1.4.5. All other fields can be left as they are. To make these settings come into effect close this dialog box and restart your machine.
- 1.5. To connect to the internet go to o do this go to the apple menu, Control Panels → PPP (or Remote Access) and click connect
- 1.6. You will need to configure your proxy settings.
- 1.6.1. In Netscape, go to **Edit** and then **Preferences** Scroll down to the **Advanced** option, and select **Proxies** Under **Automatic Proxy Configuration URL**, enter:  
<http://www.usyd.edu.au/proxy.pac>