



Eduroam



Setup Guide for Microsoft Windows XP

Document Description: Setup instructions for configuring the Eduroam wireless supplicant software and configuration on Windows XP clients.

These instructions are for use with the native windows wireless drivers. They are not compatible with 3rd party wireless drivers such as 'Intel Pro-Set'.

For use by: All staff and students using Windows XP to connect to the Eduroam network

For more information on Eduroam or its participating institutions, please visit

<http://www.eduroam.org/>



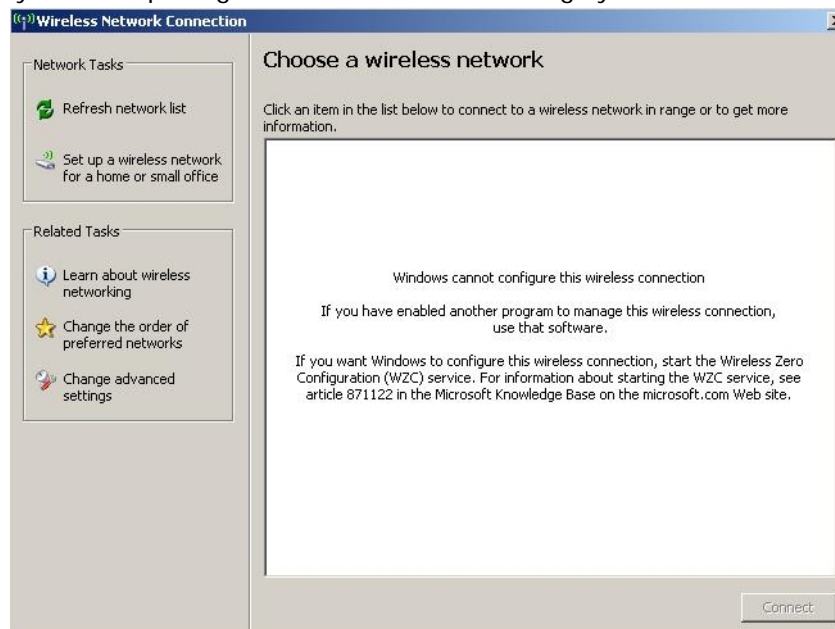
1. Background

The following instructions explain how to configure Windows XP to connect to Eduroam at the University of Sydney. Once configured, you can then connect to any other participating Eduroam institution in the world.

2. Before you start....

2.1. Check that no third party wireless configuration software is installed on your machine. One of the most common wireless configuration software packages is the Intel proset tools. Third party wireless software packages will not function along side the SecureW2 client. In order to check these settings you need to ensure your wireless adaptor is enabled and follow the steps below.

- a. Open 'Start'
- b. Open 'Control Panel'
- c. Open 'Network connections'
- d. Identify your wireless connection which will usually be named 'Wireless network connection'
- e. Open 'Wireless network connection'
- f. If you see a message in this window as shown below you need to remove or disable the third party software package to allow windows to manage your wireless network.



- g. The removal of the software can be performed by opening add/remove programs from control panel once you have identified the software installed on your machine. Inexperienced users should seek assistance from the ICT Helpdesk before proceeding with this step as wireless adaptor drivers may need to be reinstalled after the step above is performed.



2.2. Ensure that the user account installing the software has administrative privileges. If your user account does not have local administrative privileges there are two options:

- a. Request that an administrator installs the software for you using an account with local administrative privileges.
- b. Promote your own account and install the software using your own user account.



3. Installation

3.1. Using a web browser, download the USYD_SecureW2_Installer.exe program from the IT Assist website to install the client software on your PC:

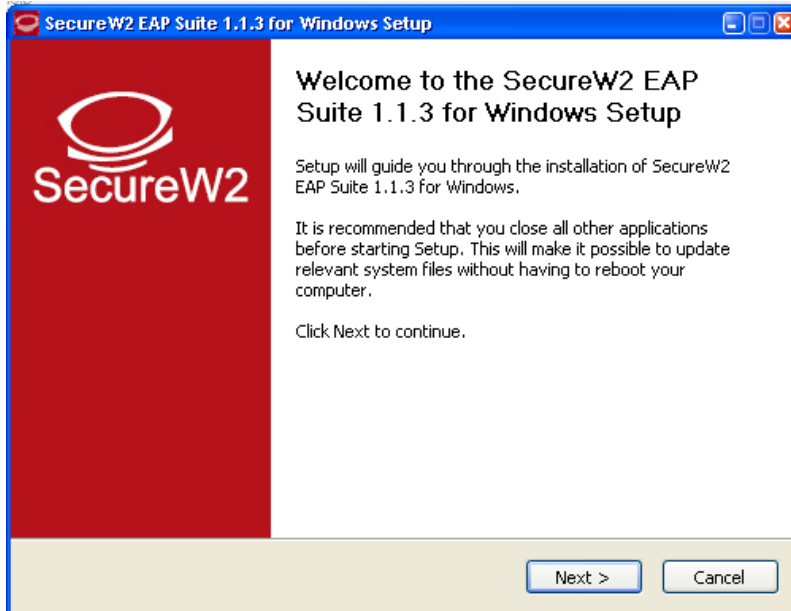
http://itassist.usyd.edu.au/eduroam/USYD_SecureW2_Installer.exe

The application installer starts up and prompts for language settings. Choose English and click **OK**

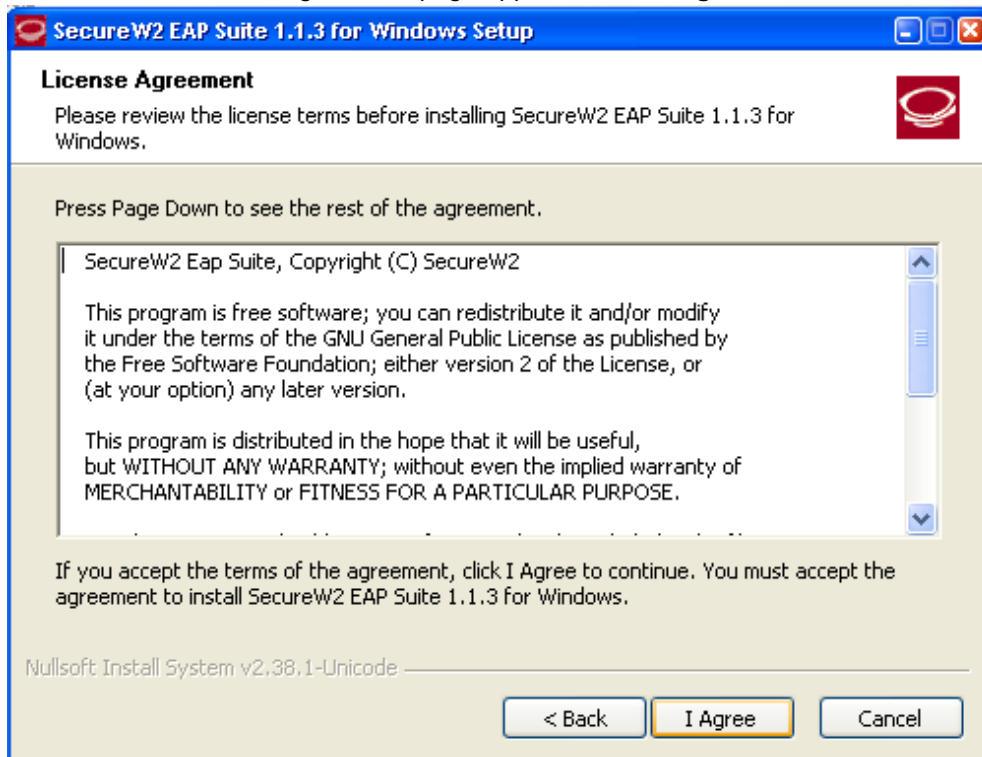




3.2. The SecureW2 welcome page appears. Click **Next>**

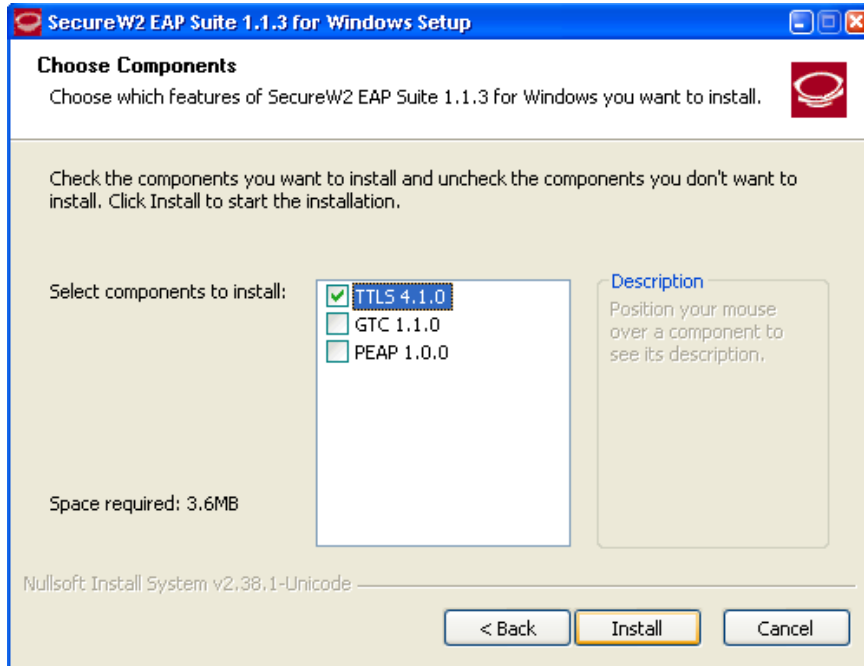


3.3. The SecureW2 Licence Agreement page appears. Click **I Agree**





3.4. Ensure that the TTLS component is selected, and click **Install**

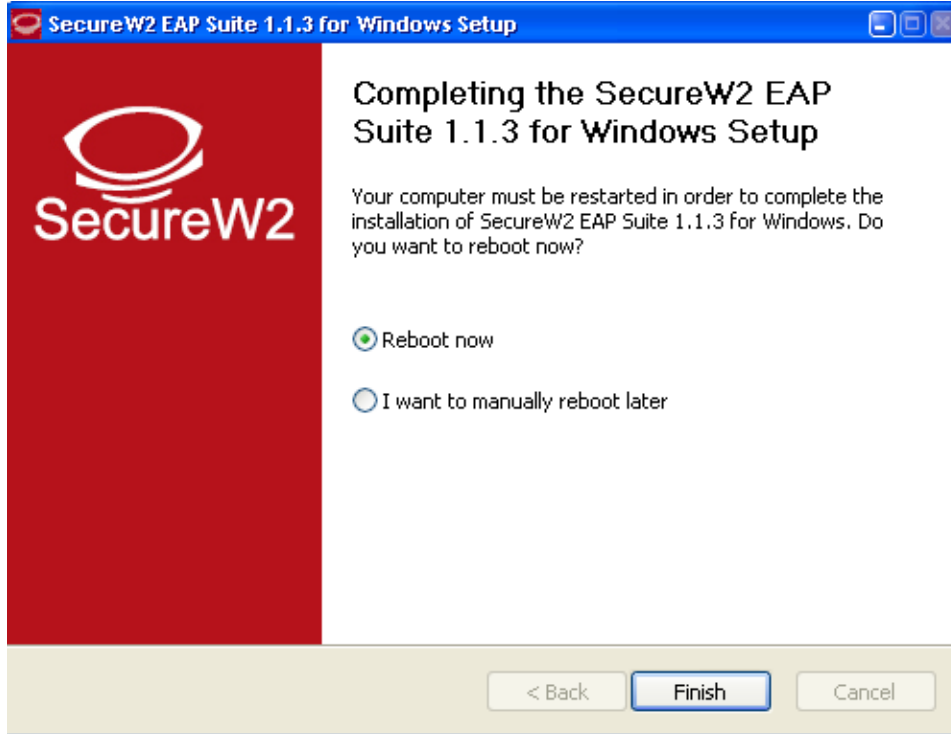


3.5. In the "Username" field, enter your Unikey followed by "@usyd.edu.au" (e.g. [johndoe@usyd.edu.au](mailto: johndoe@usyd.edu.au)). **Note:** This is *not* necessarily the same as your university email address. Enter your Unikey password and re-enter for confirmation. Click **OK**





3.6. The installation completes and requests that you reboot your PC. Click **Finish** to reboot



Note: If the local user account used to install the software differs from the user account using the secureW2 software the you will be prompted for your unikey credentials the first time you try to connect to eduroam as shown below. Ensure you click the save password option so that you are not prompted for the information again.





- 3.7. If you experience an error during installation such as the error shown below please check your local permissions as explained in point 2.2. Known errors 110, 7, 116, 117 are all related to insufficient permissions.





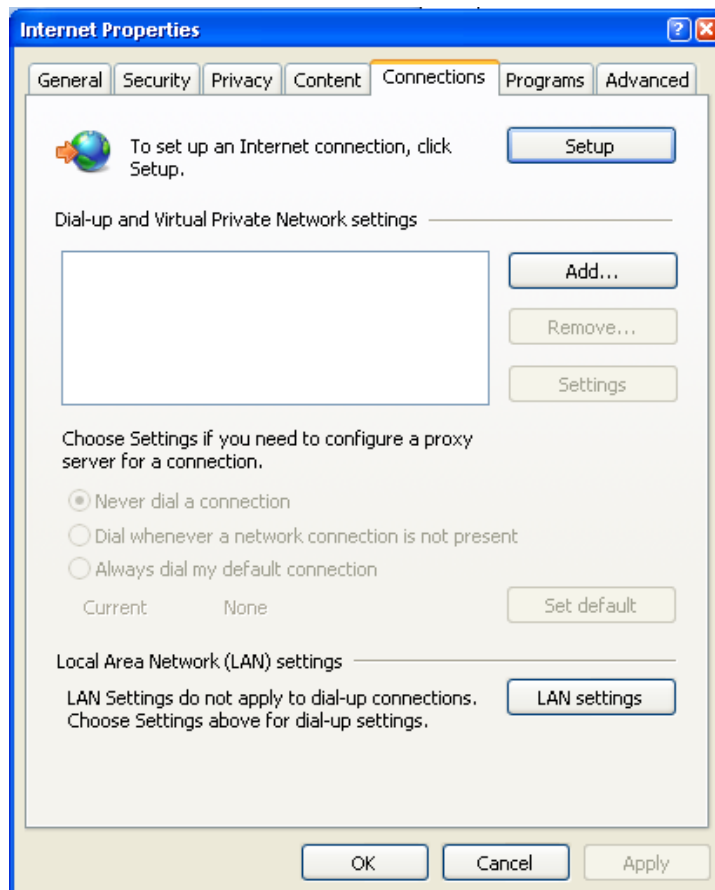
4. Proxy Settings

Using Eduroam whilst on University of Sydney campuses will require you to use the University proxy servers, similar to most wired connections at the University.

This setting will affect your internet settings when you are on a different network from Eduroam, and may need to be removed for other environments

When using whilst travelling to other Eduroam institutions, you do not need to use the proxy settings.

- 4.1. Configure the proxy settings under **Control Panel > Internet Options**, and click on the **Connections** tab



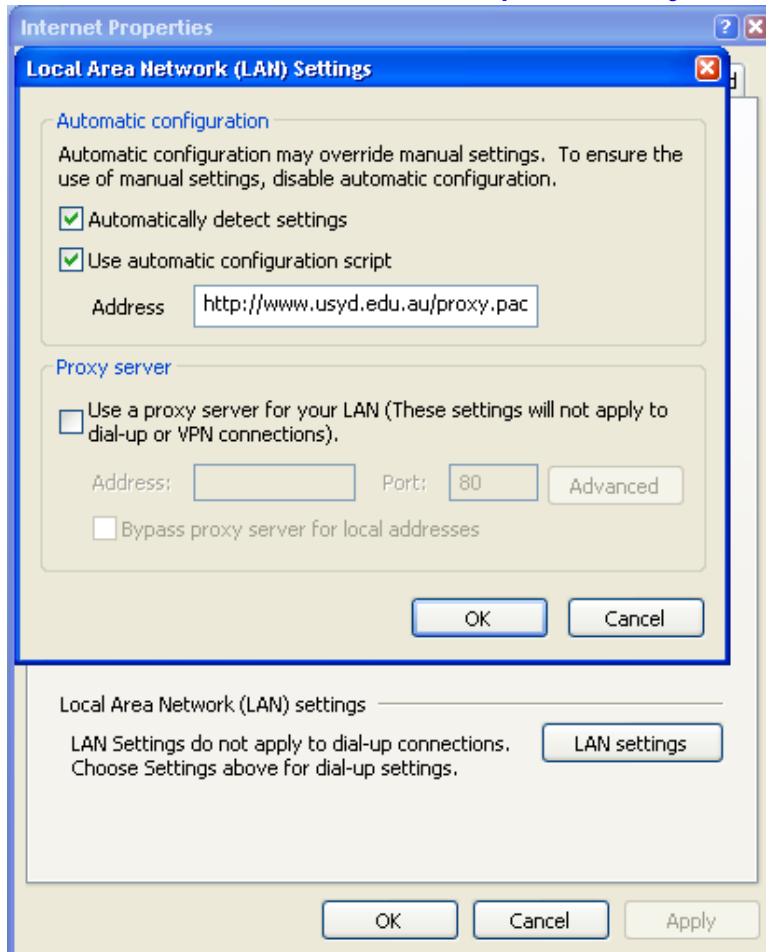


4.2. Click on the **LAN Settings** button.

4.2.1. Check the **Automatically detect settings** box

4.2.2. Check the **Use automatic configuration script** box

4.2.3. Fill in the Address field with <http://www.usyd.edu.au/proxy.pac>



4.2.4. Click **OK**, and **OK** again to close the Internet Properties window